

# THE ROCKET

**WHERE THE ACTION IS**

May 31 - June 2, 2022

**SECTION**

**Leading Rocket Member Publications**

Avoca Journal Herald • 888-343-2154  
 Dunlap Reporter • 642-2791  
 Harlan PennySaver  
 800-909-6397  
 Mapleton Press • 881-1101  
 Covering Charter Oak, Schleswig & Ute

Oakland Herald  
 888-343-2154  
 Missouri Valley Times  
 642-2791  
 Harrison County Merchandiser  
 642-2791

Coverage also includes Denison & Crawford County,  
 Manilla, Manning, Woodbine & Logan,  
 Pottawattamie County & Council Bluffs rural routes

**FREE**

# Edwards **BARGAIN CENTER**

**OVER 250 CARS TO CHOOSE FROM!**

**Largest Selection of Cars Under \$5,000 In The Area!**

**BANK FINANCING**

Available on Most Vehicles, with approved credit

CALL TODAY: 712-256-5858



**'11 SUBARU IMPREZA**  
 #ZH10252A, 87K **\$18,900**

CALL TODAY: 712-256-5858



**'16 MITSUBISHI LANCER**  
 #ZC45055A, GT, 94K **\$16,900**

CALL TODAY: 712-256-5858



**'15 KIA OPTIMA LX**  
 #ZK221288B, 100K **\$14,900**

CALL TODAY: 712-256-5858



**'14 CHEVY SONIC**  
 #ZJZ1792B, White **\$6,900**

CALL TODAY: 712-256-5858



**'16 HONDA ACCORD**  
 #ZJ1599B, Black **\$13,900**

CALL TODAY: 712-256-5858



**'15 MITSUBISHI OUTLANDER**  
 #ZK29235B, 122K **\$9,900**

CALL TODAY: 712-256-5858



**'15 HONDA CR-V EX-L**  
 #ZK221542A, Blue **\$20,900**

CALL TODAY: 712-256-5858



**'15 RAM 1500 BIG HORN**  
 #ZN221498A, Black **\$21,102**

CALL TODAY: 712-256-5858



**'06 PONTIAC G6**  
 #ZN221669A, 99K **\$7,900**

CALL TODAY: 712-256-5858



**'06 TOYOTA COROLLA**  
 #H60408B, Gray **\$9,980**

CALL TODAY: 712-256-5858



**'00 FORD F-250 SD**  
 #ZH10138A, White **\$7,900**

CALL TODAY: 712-256-5858



**'16 CHEVY TRAVERSE LTZ**  
 #ZK221411B, Metallic Gray **\$23,900**

CALL TODAY: 712-256-5858



**'17 JEEP RENEGADE**  
 #ZC12023B, 47K **\$16,900**

CALL TODAY: 712-256-5858



**'14 NISSAN NV200**  
 #ZXJ03524B, White **\$13,900**

CALL TODAY: 712-256-5858



**'12 FORD EXPLORER XLT**  
 #ZH9889B, 110K **\$15,167**

CALL TODAY: 712-256-5858



**'11 RAM 1500**  
 #ZC44780C, Red **\$14,900**

CALL TODAY: 712-256-5858



**'13 CHRYSLER TOWN & COUNTRY**  
 #ZC12000C, Red **\$7,500**

CALL TODAY: 712-256-5858



**'15 CHEVY CRUZE LTZ**  
 #ZN221482B, 127K **\$6,848**

CALL TODAY: 712-256-5858



**'16 TOYOTA HIGHLANDER**  
 #ZC45007A, 119K **\$27,500**

CALL TODAY: 712-256-5858



**'10 TOYOTA CAMRY**  
 #ZC44971B, Gray **\$5,900**

**View Our Entire Listing Of Bargain Center Cars Online**

1011 34th Avenue - Lake Manawa Exit, Council Bluffs, IA • 712-256-5858

**WWW.EDWARDSAUTOGROUP.COM**



# Roar into Harlan Fun Run



leaving by noon from Goozman's Westside • Downtown Harlan



## Saturday, June 11, 2022

\$10.00 each, all Drivers & Passengers

- Includes payout for best and worst poker hand,
- and meal plan at the Westside.

**ALL VEHICLES & PUBLIC WELCOME!**

### FARM SERVICE COOPERATIVE

HIRING for Full-Time or Seasonal positions:  
OUR DRIVERS ARE HOME EVERY NIGHT!

- **Agronomy Sales** – FT at Atlantic & Denison
- **Agronomy Outside Operations** – FT at Portsmouth and Moorhead
- **Agronomy Outside Operations** (Seasonal – all locations)
- **Custom Applicator/Agronomy Outside Operations** (Seasonal – all locations)
- **Custom Applicator/Agronomy Outside Operations** – FT at Atlantic, Denison, Irwin, Moorhead, Oakland, Portsmouth and Shelby
- **Energy Delivery Driver** - FT
- **Feed Delivery Driver** - FT
- **Transportation Delivery Driver** – FT

Positions available are Seasonal (no benefits), unless otherwise stated, and will vary by location. Opportunity to move into a full-time position from a seasonal position will vary by location and business need.

Positions will require 40+ hours per week, Monday through Friday, plus weekend hours, during peak seasons and as directed.

- Eligible candidates for a driver position must possess (or ability to obtain within 60 days of hire):
  - Valid Class A CDL, with Hazmat, Tanker and Air Brake endorsements
  - Valid Class B CDL, with Hazmat, Tanker and Air Brake endorsements
  - Pre-employment drug testing, motor vehicle record and background checks are required for all qualified candidates.

Full-time benefits include, but not limited to: Health, Dental, Vision, Life, 401(k), Roth, Coop Retirement Plan, paid vacation, sick and holidays, just to name a few.

Complete job descriptions and on-line application available on our website. EOE



Visit our website at [www.fsccoop.com](http://www.fsccoop.com)

Check us out on Facebook & Twitter too!

FSC • 2308 Pine Street • PO Box 429 • Harlan, Iowa 51537

800-452-4372 • [hr@fsccoop.com](mailto:hr@fsccoop.com) • [www.fsccoop.com](http://www.fsccoop.com)

FSC Locations: Atlantic, Defiance, Denison, Harlan, Irwin, Moorhead, Portsmouth, Shelby, Oakland

## JUNE AUCTION

Enclosed Trailer, Antiques & Collectibles,  
Tools, Lawn & Garden, Household  
June 4, 2022 10:00 AM  
White Fair Building – Red Oak, IA

The Liddell Auction Services crew hopes to see you at the June 4th Auction. Please check out our website: [liddellauctionservices.com](http://liddellauctionservices.com) to see the pictures. Also, become our friend on Facebook.

Auctioneers: Mark Liddell, Andrew Herzberg, Matt Dolch and Jason Reiber  
Liddell Auction Clerks • Famous Amos Foods on Grounds

Mark & Amy Liddell

712-778-5210 or Mark cell 712-789-0125

Amy cell 712-789-9375

[liddellauctionservices@gmail.com](mailto:liddellauctionservices@gmail.com)

Like our Facebook page:

Liddell Auction Services, LLC

View sale bill & pictures on [www.auctionzip.com](http://www.auctionzip.com) or <http://www.liddellauctionservices.com>

liddellauctionservices.com • Terms: cash, check, credit or debit card: not responsible for accidents or theft: verbal announcements on sale day take precedence.



## 156 TAXABLE ACRES M/L – SHELBY COUNTY FARMLAND AUCTION

H. DWAIN BOECK TRUST, OWNERS

MONDAY, JULY 25TH, 2022 • 10:00 A.M.

SALE LOCATION: Therildsen Center, 706 Victoria St., Harlan, IA

(Cass Township – Section 35)

CSR 2 – 68

Farmland Acres – 155.22 Acres M/L

Closing Attorney: Daniel Fischer

602 Market St., Harlan, IA • 712-755-3156

AUCTION CONDUCTED BY: OSBORN AUCTION LLC, Walnut/Harlan, IA  
Mitch Osborn, 712-579-4824 • John Clayton, 712-249-1024

Curtis Osborn, 712-246-8722 • [www.osbornauktion.com](http://www.osbornauktion.com)

DAVID W. BINTZ ESTATE, OWNER

## REAL ESTATE, FARM MACHINERY, SHOP EQUIPMENT, PRIMITIVE AUCTION

SATURDAY, JUNE 18, 2022 @ 11:00 A.M.

SALE LOCATION: 24639 360<sup>TH</sup> St. - Hancock, IA

\* items will also be on Online at Equipment Facts at 1:00 P.M.

REAL ESTATE SELLS AT 11:00 A.M. SHARP!!

To view the property call executor of the estate Lisa Meyer at 712-5792036.

**General Description:** This is a great opportunity to purchase a nice acreage of 5.33 acres M/L. The ranch style home was built in 1975 and has a double car attached garage with new garage door put on in 2020. A brand new roof was put on the house in 2020 and the house has steel siding. There are 3 bedrooms on the main floor along with a kitchen, living room and full bath. There is a full basement with a bedroom and a family room with a fireplace. There is central air along with radiant heat on the main level and basement ceilings. There are several smaller buildings on the acreage that can have multiple uses.

**Taxes:** The acreage was surveyed off from the farm and taxes just for the acreage will be prorated to the date of closing.

**Terms:** The new owner(s) will put 15% down the day of auction with closing on August 19th, 2022. This property will be sold "AS IS".

Closing Attorney: Daniel Fischer, 602 Market St., Harlan, IA 712-755-3156.

**TRACTORS:** \*2011 JD 6130D; \*1995 JD 8100; \*JD 4320 w/cab; \*JD 4020 Diesel w/ JD148 Loader w/bale spear & Bucket; \*Farmall M; \*AC D14 w/Woods Belly Mower. **SKID-LOADER:** \*2011 Case SR175 w/5.5' bucket. **FARM MACHINERY:** \*Kinze 2000 6 Row 30" Planter; \*JD 702 10 Wheel Hay Rake w/kicker wheel; \*JD 275 Rotary 9' Mower; \*JD 510 Big Baler; \*Gnuse 3 pt. 7' Bucket; \*Gnuse Model F-40 3 pt. Forklift; \*Meridian Bulk 110BST Seed Tender; \*JD 235 Disc w/Harrow & Hydraulic Wings; \*Parker 6250 Gravity Wagon w/roll top Tarp; \*JD 4 Bottom Semi Mount Plow; \*JD 5 Bottom Semi Mount Plow w/Harrow; \*JD BWA 14' Disc w/Harrow; \*Heider Barge Box Wagon; \*Heider Barge Box Wagon; Westgo 60' Field Master 8" Auger; Westfield 61' MK 8" Auger w/swing away hopper; Westfield 40' Truck Auger; Artsway 450 Grinder Mixer w/scale; Shaver 3 pt. Post Driver; JD Model B Drill; Koyker 24' Grain Elevator w/Drum w/motor; 500 Gal. Pull Type Sprayer w/booms; JD 3 pt. Sprayer w/booms & 150 Gal Tank; Triggs End Gate Seeder; Wheatley 3 pt. Bale Carrier; Wheatley 6 Bale Carrier; Schuler 210 Manure Spreader; Schuler 5'x10' Feed Wagon; Heider 6'x10' Barge Wagon w/JD running gear; Heider Auger Wagon; 2 – Kilbros 350 Gravity Wagons on JD gears; 6 Section harrow; Flatbed on JD Running Gear. **PICKUPS:** \*2008 Ford Super Ranger XLT 4x4; \*1999 Ford F250 Super Duty Triton V-10. **4 WHEELER & RIDING LAWN MOWER:** \*Kawasaki 650 Brute Force 4 Wheeler; \*Dixon Ultra ZTR Riding Lawnmower. **HOUSEHOLD & MISC:** Electric Lift Chair; Recliner; Couch; End Table; Kitchen Table w/2 leaves & 4 chairs; 2 - 3 Piece Bedroom sets; Other Misc. items. **PRIMITIVES & ANTIQUES:** \*JD 290 2 Row Pull Type Planter w/boxes & markers; 4 – JD A 80lb Wheel Weights; Cast Iron Hay Trolley; Cast Iron Hand Corn Sheller; Sad Irons; 3 – Metal Pulleys; Wood Toboggan; Buckeye Jack; Wheel Barrel; 2 – Wood Sleds; 2 - Square Wash Tubs; Ceramic Yard Light; Yard Gate; Granite-ware Coffee Pot; Blue Canning Jars; Cupola; License Plates; Small Amerco Feed Sign; Dehomer; 4 – Quilts; Wood Plane; 5" Bench Vise; Cast Iron Man Hole Cover; No Parking Sign. **SHOP & LAWN EQUIPMENT:** Echo CH-3 Chain Saw; Bench Grinder; Bolt Cutters; Coats Tire Changer; Steel Post Driver; Craftsman Drill Press; Power Washer; Napa 5 hp. Upright 60 Gal. Air Compressor; Pull Type Winco PTO Generator on 2 wheel Cart w/welder; Metal Welding Bench; Welding Helmets; Lincoln Arc Welder; Pickup fuel tank w/12 volt Electric Pump; Duracraft 37" Wood Lathe; Craftsman Radial Arm Saw; Craftsman Scroll Saw; Log Chains; Trouble Light; 6' Wood Step Ladder; Grease Guns; Misc. Tires; Misc. Hand Tools; Misc. Items To numerous too mention. **FEED BUNKS, GATES & FENCING MATERIAL:** 6 – 10' Concrete Feed Bunks; 9 – 10' Concrete Fence Line Feed Bunks; 4 Sections – 10' Concrete Feed Bunks; Steel Posts; Fence Braces; Wood Fence Posts; Hog Panels; Several Misc. Gates; PTO Wire Winder.

AUCTION CONDUCTED BY: OSBORN AUCTION LLC, Walnut/Harlan, IA  
Mitch Osborn, 712-579-4824 • John Clayton, 712-249-1024  
Curtis Osborn, 712-246-8722 • [www.osbornauktion.com](http://www.osbornauktion.com)

## JEANIE KLINDT, OWNER REAL ESTATE, COINS, ANTIQUE & HOUSEHOLD AUCTION

SUNDAY, JUNE 12, 2022 @ 11:00 A.M.

SALE LOCATION: 28199 450<sup>TH</sup> St. - Avoca, IA

REAL ESTATE SELLS AT 11:00 A.M. SHARP!!

To view the property call Dallas Klindt @ 712-579-9920.

**General Description:** This is a great opportunity to purchase a nice acreage of 2.47 acres M/L. The house has central air with electric heat. There are 3 bedrooms upstairs with 1 bedroom on main floor. Main floor has kitchen, living room, dining room along with a pantry off the kitchen along with laundry room. There are also smaller out buildings and a very nice detached double car garage. It has a beautiful view and also an excellent location just 3.75 miles south of Avoca and only .3 miles east off of Hwy. 59.

**Taxes:** Approximately \$1104 per year. Taxes will be prorated to date of closing.

**Terms:** The new owner(s) will put 15% down the day of auction with closing on August 5th, 2022. This property will be sold "AS IS".

Closing Attorney: Daniel Fischer, 602 Market St., Harlan, IA 712-755-3156.

**COINS:** 1896 & 89 Morgan Silver Dollar Mint Coins; 1892 Morgan; 9- Morgan Silver Dollars; 8- Eisenhower Silver Dollars; 2002 & 03 Uncirculated Silver American Eagles; 2001 Silver Dollar Liberty Special Edition Mint; 2 – 1889 Morgan Silver Dollars; 4 – Eisenhower Dollars; 14 – Franklin Half Dollars; 10 – Liberty Half Dollars; 1934 Walking Liberty Half Dollar; 1900 Half Dollar – San Francisco Mint; 3 – Silver Kennedy Half Dollars; 1929 Standing Liberty Quarter; 22– Silver Washington Quarters; State Quarters First 15 States in decorative holders; 34 – Roosevelt Silver Dimes; 11 – Mercury Dimes; 1882 & 1905 US Nickels; 8 – Liberty 5 cent Pieces; 1864 2 Cent Piece; 150 Wheat Pennies; 36 – 1943 Steel Pennies; 50 – Indian Head Pennies; 50 – Wheat Pennies; 16 – Buffalo Nickels; 1964 Mint Set of Penny-Kennedy Half Dollar; 2000 24kt Gold Platted Mint P Set; 1977 Proof Set of Coins San Francisco Mint; Lincoln Memorial Penny Collection; 1972 Complete Proof Set Denver Mint; Washington Quarters; Roosevelt Dimes; Misc. Bag of coins; Foreign Coins; 1864 Confederate \$20 Bill; 1928 \$2 Bill; 1957 \$1 Silver certificate; Bill & Hillary Clinton \$3 Bills; 2 – 1928 \$2 bills; 2 - \$5 Silver Certificates; 45 - 1943 Steel Pennies; Several Other Misc. Coins Too numerous to mention. **APPLIANCES:** Whirlpool Refrigerator/Freezer; Maytag Washer; Frigidaire Electric Dryer; Tappan Electric Stove; Whirlpool 15 cu. ft. chest type deep freeze; Bissell Power Force Vacuum; Toaster; Electric Skillet; Metal Detector. **HOUSEHOLD & MISC:** Glider; Couch; 3 Pc Blonde Bedroom Set; Lazyboy recliner; Swivel rocker chair; Schmoller and Mueller Piano; Wood Desk; 2 drawer file cabinet; Dining room table with folding leaves; Double Bed; Small Wardrobe; Several Jigsaw Puzzle Pictures; Pyrex; Pots & Pans; Tupperware; Army Cot; Dresser; China Hutch; Other Misc. items too numerous to mention. **ANTIQUITY FURNITURE:** 3 – Large Oak Rockers; Oak Platform Rocker; Oak School desk; Small Oak rocker; 3 – Cane Straight chairs; Cedar chest; Small Cedar Chest; Oak Dresser w/beveled mirror; 4 – Oak folding chairs; Wood folding table; Mission Oak Library Table; Oak Dresser; Small Oak library table; Square Oak Table; Oak Captain Chair; Oak Commode; Oak Parlor Table; Singer Treadle Sewing Machine in Oak Cabinet. **PRIMITIVES:** Cast Iron Griswold Ableskiver 962 Pan; Small Cast Iron Griswold Skillet; Round Wash Tub; Metal Standard Oil Sign; Bushel Basket; Boiler; Sausage Stuffer; Metal Sprinkling Can; Chick- en Feeder; Sled; 3 – Egg Baskets; Ford Tractor & Allis Chalmers Metal Gas Cans; Metal Buckets; Tractor Seat Stand; Dinner Bell on pole; Steel Wheels; Cast Iron Cistern Pump; Old Tricycle; Golden Sun Feeds Thermometer; Radio Flyer Wagon; Cob Fork; 3 tine Pitch Fork. **ANTIQUES:** 3 Gal. Red Wing Water Cooler; 8 Quart Butter Churn; George Kreuzberg Stone Crock bottle; Colored Ball Canning Jars; Cream Bucket; Several Pieces of Depression Glassware; Several Pieces of Fostoria; Fostoria Pitcher & Cake Plate; P&G Elevator Hancock, IA Thermometer; JD Kitchen Collectible Items; Sad Irons; Shirley Temple Glass Colored Nesting Bowls; Small Granite-ware Coffee Pot; Lincoln Logs; Tinker Toys; Square Back Trunk; Copper Boiler; Spoon Collection; Macomb 3 Gallon Crock; Costume Jewelry; 7 - Handmade Quilts; Quilting Racks; Nail Keg; Advertising Pieces; Hand Made Quilts; Linens; Ertl Toys; Misc. Pictures; 3 - Globes; Lone Wolf Picture; Shelby Co. 1911 Atlas; Pott. Co. 1919 Atlas; Shelby Co. Rural Residence 1958 Book; Shelby Co. Past/Present 1915 Vol. 1 & II; Shelby Co. Past/Present Vol III 1916-76; Shelby Co. Pictorial Atlas; Pott. Co. "Makers of Fire" 1978 History book; 125 Year History Avoca, IA 1994; Jacksonville, IA History Book; 2 – Shelby History Books; Costume Jewelry; Avoca Bluebird License Plate Topper; Avoca Miniature Bells; 2 – Small Arrowheads; Cookbooks; Suitcases; Shelby Cardinal Annuals; Harpoon Annuals; 1893 Brass Bed. **TOY TRACTORS & TOYS (Several NIB):** JD Precision 70 Diesel tractor; JD A w/umbrella FFA 2001 Special Edition; JD 70 Vintage w/steel rims; JD 1970's D; JD 70; JD Industrial BI; JD 50th Anniversary 12A combine; Farmall F20; Case L; Case VAC; Allis Chalmers WD45; 1/64 JD Tractors and toys; 1/64 IH 1086; Ford 8630 1/32 tractor; "Wings of Texaco" 1931 Stearman Biplane; JD 730 & 620 Pewter; 1903 Lehmann Wind up toy; Johnny Tractor Book. **SHOP & LAWN EQUIPMENT:** Toro Riding Lawnmower; Handyman Jack; Axes; Misc. Hand Tools; Coleman 4.5 hp. 30 Gal. Air Compressor; Miles A/C Arc Welder; Parmak 6-volt Electric Fencer. **FARM MACHINERY & MISC:** JD 810 Fully Mounted 3-16 Plow; JD 80 6' Rear Blade; JD 127 6' Gyromor; JD 18' Straight Disk; Kourar 22' Harrow; Flatbed w/Westendorf Gear; 500 Gallon Gas Barrel; Horse Drawn – Horse Power.

AUCTION CONDUCTED BY: OSBORN AUCTION LLC, Walnut/Harlan, IA  
Mitch Osborn, 712-579-4824 • John Clayton, 712-249-1024  
Curtis Osborn, 712-246-8722 • [www.osbornauktion.com](http://www.osbornauktion.com)

Get the Word Out FAST!

Advertise your AUCTIONS SALES or HELP WANTED in THE ROCKET

Agricultural Advertising to Grow Your Business THE ROCKET





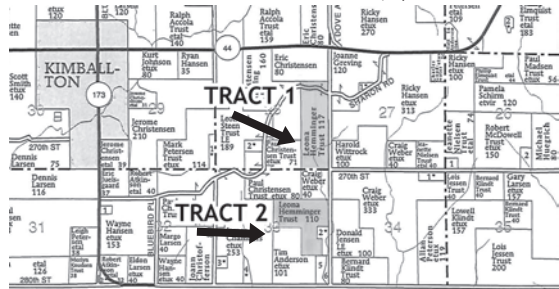


**AUDUBON COUNTY FARMLAND AUCTION** Leona Hemminger Trust  
227 ACRES M/L sold in 2 tracts, Bareground

**Thursday, June 9, 2021, 10 AM**  
Elk Horn, Iowa Town Hall

**TRACT #1:** 116.93 Acres M/L, Section 28-79N-36W, Sharon Twp, CSR-2: 69, 96.55 crop acres, Buyer shall receive a cash rent credit at closing of \$9,700, Taxes: \$3,582

**TRACT #2:** 109.54 acres M/L, Section 33, Sharon Twp, CSR-2: 63.6, 92.81 crop acres plus 7.13 acres CRP waterways, Buyer shall receive a cash rent credit at closing of \$9,300 Taxes: \$3,230



**Terms:** 10% down sale day into Wayne Hansen Real Estate Trust, balance due 9/9/2022, with full possession 3/1/2023.  
Wayne Hansen Real Estate, represents the seller in these transactions. Sellers shall retain 2022 CRP payments. Announcements sale day take precedence over printed materials. FSA info is believed accurate, but not guaranteed by sellers or broker. Call for complete legals. Bids are not subject to finance. Taxes prorated to closing.  
View Maps & Drone Video at waynehansen.com. For more information call 712-249-1785



SEE OUR WEBSITE FOR ADDITIONAL LISTINGS:  
• HOMES  
• ACREAGES  
• BUSINESSES • FARMS

- 1<sup>st</sup> and 2<sup>nd</sup> Shift General Production
- HR Assistant
- QA Tech
- QA Supervisor 2<sup>nd</sup> Shift
- IT Support Tech
- Staffing Manager
- Cost Accountant

**We're Hiring!**  
**STARTING WAGE INCREASE!**



**Starting Wage**  
**\$17.25/hr**

Come join our team of over 240 dedicated team members

You're not just a number at Prepared Foods!

**2<sup>nd</sup> Shift Starting Wage**  
**Includes shift differential**  
**\$18.25/hr**

Applications can be picked up at  
1231 870th St. (Hwy 59) | Harlan  
or apply online at monogramfoods.com

**Monogram**  
prepared meats  
712-304-5347  
1231 870th St. (Hwy 59) Harlan



**HELP WANTED**

Shelby County Road Dept. is seeking to fill the following position:

**Operator I:** 40 hrs/week normal.

Experience preferred. Possession of valid Iowa Commercial Driver's License (CDL) with Class A endorsement required. Apply at Shelby County Engineers Office 1411 Industrial Pkwy. Harlan. Applications will be accepted until position is filled.

**OFFICE ADMINISTRATIVE TEAM SUPPORT**

Seeking a part time staff member to provide a variety of office support to our office admin team.

Responsibilities including but not limited to accounts payable, phone duties, filing, sorting, and organizing. Strong English, math, computer and customer service skills helpful. M-F, 8:00-12:00.

Sta-bilt is a highway contractor located in Harlan, IA and is an EEO/AA employer dedicated to affirmative action.

Resumes to: dave@sta-bilt.com

**Sta-bilt Construction Co., Inc.**  
1339 Nishna Ave., P.O. Box 151  
Harlan, IA 51537 • 712-755-5153



is circulated via:

Avoca Journal Herald  
888-343-2154

Dunlap Reporter  
712-642-2791

Harlan PennySaver  
800-909-6397

Mapleton Press  
Covering Charter Oak,  
Schleswig & Ute  
712-881-1101

Oakland Herald  
888-343-2154

Missouri Valley Times-News  
712-642-2791

Harrison Co. Merchandiser  
712-642-2791

Coverage also includes Denison & Crawford County, Manilla, Manning, Woodbine & Logan, Pott. County & Council Bluffs rural routes

**FREE QUOTES**

High Risk Auto Insurance  
**TOO HIGH?** (SR-22 Filings)  
See

**CENTURY FARM INSURANCE**

1117 7TH St., Harlan  
712-755-3171 • 877-755-3171

It Pays to Advertise in  
**ROCKET**

**DENISON LIVESTOCK AUCTION**

Established Since 1943



• Feeder Pigs 8:30 a.m. • Misc. 9:00 a.m.  
• Sheep 9:00 a.m. • Cow 11:00 a.m.  
Followed by Feeder Cattle



**Sale for Saturday, June 4th**  
**No market report due to early deadline.**

**Cows Consigned:**  
14 Big BI Gentle Purebred Angus Cows w/big calves @ side, 4th to 7th calf, no papers, weather permitting pending CALL  
Call Friday for latest consignments.

Thanks to our Veterans of all branches that sacrificed to give us the freedoms that we have today. The United States is so spoiled. Does anyone really appreciate what we have? I wonder. If we all lived in a 3rd world country for a year we would all have a better attitude for what the Veterans sacrificed their lives for. What happened in Texas makes me sick.....Please pray for the families and all those affected by this terrible tragedy.

**★ UPCOMING SALES ★**

**Saturday, June 25th** 8:00 a.m. Crawford County Farmground, Janet Iversen, Executor of the Charles Bando Estate, seller  
**Saturday, August 6th** 8:00 a.m. Crawford County Farmground, Acreage sold separately, Melvin & Mary Kenkel Estate, owner

Check out our web page at: [www.denisonlivestock.com](http://www.denisonlivestock.com)

For latest consignments, call Denison Livestock Auction, Denison, Iowa  
Barn 712-263-3149 • JR Mobile (712) 269-7777 • Tom 712-263-0224  
Dave Vanness 265-1189 • Randy Pryor 644-7610

**ERV PAULEY & SONS, OWNERS-OPERATORS**

**Denison Livestock SPECIAL CALF & YEARLING SALE**

To be held at Denison Livestock Auction  
**THURSDAY, JUNE 9 • 11:30 A.M.**  
Expecting 1500 - 1800 head • Most calves GT Vac manyX2

**Suitable for Grass:**

- 230** Red Angus SH 600# - 800# Cushing
- 100** BI X SH 550# - 750# Dunlap
- 100** BI Hfs 550# - 750# Homeraised Oakland
- 22** Char/Red Ang SH 350# - 500#
- 9** BI SH 550# - 600# Lake City
- 150** BI X SH 800# - 900# Smithland
- 135** BI Sts 850# - 975# Denison
- 130** BI SH 65#0 - 850# Kingsley
- 100** BI Sts 750# - 850# W.O. local farm

- 70** BI Hfs 775# - 850# Remsen CALL
- 65** BI/BWF Sts 875# - 925# Mapleton
- 65** BI/Red/Char Sts 750# - 850# Vail
- 47** BI/BWF SH 800# - 900# W.O. Meriden
- 45** BI SH 70#0 - 900# Crescent
- 35** Char/Red Sts 900# - 1000# Denison
- 30** BI/Red X Hfs 775# - 850# Denison

500 - 700 cattle in late and smaller consignments 300# - 700#

For complete listing check website : [www.denisonlivestock.com](http://www.denisonlivestock.com)

For latest consignments, call Denison Livestock Auction, Denison, Iowa  
• Barn (712) 263-3149 • JR Mobile (712) 269-7777 • Tom (712) 263-0224 • Dave Vanness (712) 265-1189  
**ERV PAULEY & SONS, OWNERS-OPERATORS**

**CATER TO MORE CUSTOMERS** **THE ROCKET**  
with an ad from...

Invite more customers to your door with an ad from *The Rocket*. An ad in The Rocket is an ideal spot to showcase your products and services to the customers who need them most.

**Call A Rocket member!**



**SPECIALIZING IN QUALITY POST FRAME BUILDINGS**



**Commercial  
Equestrian  
Hobby Shops**

**Agricultural  
Garages  
And More!**

**NE and Western IA**  
1903 Hwy. 30  
Missouri Valley, IA 51555  
402-426-5022  
712-600-2410

**Wisconsin**  
N6522 US Hwy. 51 STE C1  
Portage, WI 53901  
608-988-6338  
920-889-0960



www.GingerichStructures.com



**BROCK AUCTION COMPANY, INC.**

**"The Land Marketing Professionals for Over 100 Years"**  
Proudly Presents  
**141 Unimp. Acres M/L of Good Quality Rolling  
Woodbury County Farmland**  
(Per Original Government Survey)  
**LIVE PUBLIC AUCTION AND ONLINE BIDDING**  
Online Bidding @ [BrockAuction.com](http://BrockAuction.com) & Click on **HiBid**  
Friday, June 10, 2022 @ 10:00 AM

**LAND LOCATION:** From Anthon: Go 4 miles Northwest on D-30, then go North 2 miles on Lucas Ave.  
**From Correctionville:** Go 3 miles Southwest on Hwy 31, then go 3 1/2 miles West on 180th St.  
**From Moville:** Go 3 miles East on Hwy 20, then go 5 miles East on D-22, 2 miles South on L-21, then go 1 mile East on 180th St.  
**From Pierson:** Go 2 1/2 miles West on D-12, 5 miles South on L-21 and continue South 2 miles on L-21, then go 1 mile East on 180th St.

**GENERAL DESCRIPTION:** What a wonderful offering this farm is!! Centrally located between Anthon, Correctionville, Moville & Pierson makes this farm easy for you no matter which one of these towns you call home. This rolling Woodbury County farm is a very nice representative piece for this area with one exception. It has been farmed by one of the areas best farmers, a tenant who cares for the land as if it was his own. This farm is a good producing piece that has had great conservation practices used; the land shows the care it has had all these past years. The Woodbury FSA Office shows there are 137.78 Farmland Acres, with 130.28 Cropland Acres with a 129.99 acres combase, with a 184 bu. PLC Yield Index & it is enrolled in the ARC County Program. The Woodbury NRCS & Assessors Office shows the main soil types to be Ida & Napier & Monona. The farm carries a weighted CSRII average of 48.3. Good representative numbers for the area.

In todays changing world of agriculture where good tracts like this don't come on the market all that often make it very important to take advantage of it when you have the opportunity. Couple that with the fact that you more then likely never have another chance at this property again in your lifetime. So if you are in the business for the long term and your family is as well, please do yourself a favor and give this farm strong consideration!!

Thanks and Best of Luck to all.  
Bruce and Austin



**RJB FARMS & BARBARA BUCKLEY L.E. - OWNERS**



**BRUCE R. BROCK RE L.L.C.**  
Licensed in IA, SD & NE  
30 Plymouth St. SW, Le Mars, IA  
(712) 548-4634

**BRUCE R. BROCK - BROKER**  
World Champion Auctioneer



**AUSTIN POPKEN - REALTOR**  
Auctioneer

"The Midwest's Largest and Fastest Growing Auction Company with 4 Generations Serving The Midwest Since 1919"

**FOR SALE:** 2011 John Deer 3720, with loader, bucket and sorks. 615 hours on it; 4WD, A-C, Heat, Indoor Cab, Like New Condition. Asking \$35,000. Call 402-981-3633.

**R&S MACHINERY**

Ph. 515-230-2524 • Ogden, IA  
[www.randsmachinery.com](http://www.randsmachinery.com)

- **TRACTOR**
- '16 Bobcat T770 Skid Loader, CHA, 405H, Like New ..... \$72,500
- **TILLAGE EQUIPMENT**
- '06 Salford 570RTS, VT, Rolling Basket/Harrow ..... \$32,500
- JD 637 Disc, 29' 3", 3-Bar Harrow ..... Call
- C-IH 3950 Disc, 29' 3", 3-Bar Harrow, Hyd. Level ..... \$17,500
- '14 C-IH RMX 340 Disc, 25', 3-Bar Harrow, Nice ..... \$26,000
- **PLANTING & SEEDING**
- Kinze 3500 8/15, Combos, Good Condition ..... Call
- JD 7300 8RN, 3 pt., Coulters..... Call
- JD 7200 6RN, Vac, TW, Shedded ..... \$9,000
- Kinze 3100 8RN, 3 pt., Hyd. Drive, Insecticide..... \$14,500
- C-IH 1200 6RN, 3 pt., TW, Could be 8RN ..... \$10,500
- C-IH 955 8RN, TW, Nice Planter ..... \$9,950
- Kinze 3500, 6RN, Pivot, Combo's, Low Acres..... \$34,500
- White 6700, 8RN, 3 pt., TW, Good Cond ..... \$7,250

Cash paid for good used machinery. Give us a call.

**UPCOMING AUCTIONS**



**Tuesday May 31, 2022 @ 10 A.M.**  
Timed Online Real Estate Auction -  
**102 Rosa Drive Neola, IA**  
Roger & Carolyn Hemmingsen, Owners  
3 Plus BR all Brick Ranch - two lots!  
More information and Online Bidding  
at [www.spencerauctiongroup.com](http://www.spencerauctiongroup.com)  
Hannah Spencer Johnsen 712.592.9794

**Thursday June 9, 2022 @ 6 P.M.**  
Storage Unit Items Live Auction  
1321 Main St. Council Bluffs, IA  
Hannah Spencer Johnsen 712.592.9794  
or 712.644.2151

**Monday June 27, 2022 @ 10 A.M.**  
Timed Online Real Estate Auction  
**902 Ave R - Carter Lake, IA**  
Lake Front Property with a 3 BR, 2 bath  
home  
Hannah Spencer Johnsen 712-592-9794  
or 712.644.2151

**Monday June 6, 2022 @ 11 A.M.**  
Hybrid Land Auction -  
**Leuschen Family Trust, Owners**  
226.55 Acres m/l Harrison County, IA -  
Selling in 3 Tracts  
Auction Location: Spencer Auction Facility,  
BeeBeeTown, IA  
Tract 1 - 3755 220th St. Portsmouth, IA 3  
Acres m/l with Home and Buildings  
Tract 2 - 111.4 Taxable Acres m/l Section  
35, Douglas Twp.  
Tract 3 - 112.15 Taxable Acres m/l, Section  
2, Cass Twp  
Ed Spencer 402.510.3276 or 712.644.2151



402-510-3276 Ed Spencer  
402-510-5853 Luke Spencer  
712-592-1317 Steve Christiansen  
712-592-9794 Hannah Johnsen  
322 E 7TH ST. LOGAN, IA 51546  
712-644-2151  
[www.spencerauctiongroup.com](http://www.spencerauctiongroup.com)

**Tuesday June 28, 2022 @ 10 A.M.**  
& 11 A.M.  
Timed Online Land Auction -  
**289.33 Acres m/l Harrison County, IA**  
Selling in 2 Tracts  
Tract 1 - 160 Acres m/l Section 13,  
Douglas Twp. - Park Family Farm, LLC,  
Owners  
Tract 2 - 129.33 Acres m/l Section 24  
Douglas Twp. - AM Farms, LLC, Owners  
Register & Bid Online at  
[www.spencerauctiongroup.com](http://www.spencerauctiongroup.com)  
Ed Spencer 402.510.3276 or  
712.644.2151

**Kickin' It 50 Years**

**2022 Logan Quarry  
Hare Scramble**

**JUNE 5TH**

Sign Up: 7:30 a.m.

Classes & Start Times:

Kids Races: 9 a.m.

A & B Class Races: 11:30 a.m.

C Class Races: 2:00 p.m.

**100% Payback for the AA Class  
Rider Entry: \$45 • Gate Fee \$5**

Take Hwy. 30 East out of Logan, first turn, north at Overton Ave.  
and head into the Logan Rock Quarry. Follow the Signs!



For more info,  
[IERA.com](http://IERA.com) & Hill Blazers Facebook  
AMA Not Required

**Car & Bike Night**

**on the Square Harlan, Iowa**

**3rd Thursday, May thru September**

June 16, July 21, Aug. 18, Sept. 15

"Roar Into Harlan Car & Bike Night"

for additional info and weather related notices. email: [roarintoharlan@gmail.com](mailto:roarintoharlan@gmail.com)



**Thursday,  
June 16**

**6 pm - 9 pm**

**on the Harlan Square**

Live Entertainment • Food • Fun • Prizes!





# LAND AUCTION

**240 Acres m/l of Adair County Land**  
**Thursday, June 23 ~ 10:00 am**  
 Anita Community Center ~ 805 Main St. ~ Anita, IA

Summit Township, Sec 33 \* Taxable acres: 223 m/l  
 CRP acres: 24.73 \* Cropland acres: 153.45  
 CRP contract expires 9/30/2024  
 Average CSR2: 55.2 \* Gross property taxes: \$4,737  
**Full Possession on 3/1/2023**

## Ruby Wortman Estate

**Robert Wortman, Executor**  
 James Mailander Attorney & Closing Agent  
 Full sale bill at: [www.massenalivestock.com](http://www.massenalivestock.com)  
 Mark Venteicher, Auctioneer

# ESTATE AUCTION

**Saturday, June 4<sup>th</sup> ~ 10:30 am**  
**69626 - 670<sup>th</sup> Street, Cumberland, IA**

### Miscellaneous Tools

Miller 250 AC/DC welder \* Craftsman wrenches \* Craftsman grinder, routers, sanders skil saws \* Makita grinder \* Bench grinder \* Log chains \* Bolt cutters \* Pipe wrenches \* Torch \* Cordless drills \* Punches & chisels \* Tap & die set \* Misc wrenches \* Numerous bolts, some big ones \* Forks, shovels, spades \* Numerous clamps \* Fencer \* Fence stretcher \* Lots & lots of tools not listed

### Farm Equipment

1971 JD 3020 diesel, WF, Synchron trans \* JD 2940 MFD, 16sp, w/260 JD loader \* 1983 Case 2590, 12sp, semi PS, tack shows 2700 hrs \* AC WD tractor \* (3) AC WD tractors for parts \* AC D17, series III \* Gleaner F3 combine w/4-row corn head & 315 AC grain table \* New Idea picker, 2-row \* M&M drill, 10' \* Deutz Allis 385 4-row planter \* AC chisel plow \* McFarlane harrow, 30' \* JD 4-section harrow \* Oliver 4-bottom plow \* Arts Way 450 grinder \* AC round baler \* (2) Barge wagons \* Bradford gravity wagon, 300 bu \* Kewanee silage wagon \* AC 4-row cultivator \* AC 2600 disk \* NH 451 sickle mower \* Land Pride bush hog, 25-84 \* Kewanee blade, 8' \* 3pt post hole auger \* May gooseneck trailer w/ramps, 20'

### Woodworking Equipment

Grizzly planer, 20", spiral cutter head, variable speed, 220V \* Grizzly planer, 20" 220V \* Grizzly AirVac \* Grizzly table saw, 10", left tilting, 220V \* Grizzly jointer, 8"x75", 220V \* Grizzly shaper, 3hp \* DAYTON bench grinder \* Belsaw planer \* Drill press \* SuperMax 37x2 w/SandSmart, 110V \* Woodmaster planer \* Bandsaw \* Craftsman drill press \* Craftsman wood lathe, variable speed \* Craftsman jointer/planer, 6 1/8" \* Oscillating spindle sander \* Numerous bits and saw blades

### Lumber

Numerous piles of kiln dried, rough cut ~ 30,000 - 40,000 board feet  
 Walnut ~ Oak ~ Cherry ~ Pine ~ Cedar

### Antiques & Collectibles

Hand pump \* Telephone \* Iron wheels \* Iron seats \* School chair \* Lantern \* Cider press \* Old Buick radiator caps

**Lunch on grounds ~ View pictures at: [www.massenalivestock.com](http://www.massenalivestock.com)**

## CECIL BOOS ESTATE

**Lela Lank Boos, Executor**

Cash or good check - Not responsible for theft or accidents ~ Announcements day of sale take precedence over written material  
 Auctioneers: Mark Venteicher 712-779-0169 ~ Tanner Runyan 712-779-0513

**Leuschen Family Trust, Owners**

## HYBRID LAND AUCTION

**226.55 Acres m/l Harrison County, IA**

Spencer Auction Facility, Beebeetown - 3328 Overton Ave

**Tract 1 - 3755 220th St. Portsmouth, IA**  
 • 3 Acres m/l, 2 story 4 Plus BR's, 2 bath home with 5' x 56' barn, 2 car attached garage  
 • Possession upon closing 7/7/22  
 • Open For Viewing June 2, 5-7 PM

**Tract 2 - 111.4 Acres m/l Section 35, Douglas Twp.**  
 • 112.08 Acres m/l Cropland Certified in '21 - 46.8 CSR2  
 • Selling subject to a Cash Rent Lease for the '22 Crop Year  
 • '22 Cash Rent to Buyer

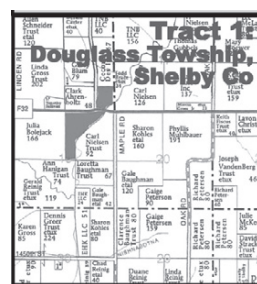
**Tract 3 - 112.15 Acres m/l Section 2 Cass Twp.**  
 • 104.94 Acres m/l Cropland Certified in '21 - 54.8 CSR2  
 • Selling subject to a Cash Rent Lease for the '22 Crop Year  
 • '22 Cash Rent to Buyer

Online bidding begins 5/30/2022 at [www.spencerauctiongroup.com](http://www.spencerauctiongroup.com)  
[WWW.SPENCERAUCTIONGROUP.COM](http://WWW.SPENCERAUCTIONGROUP.COM) Spencer Auction Group, 322 E. 7TH St. Logan, IA 51546

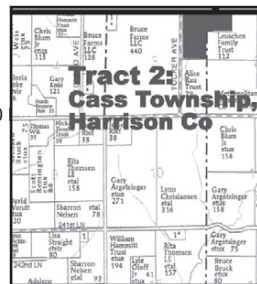
## MILDRED C. REINIG TRUST & THOMAS A. REINIG REAL ESTATE AUCTION

**187.7 ACRES M/L, 2 TRACTS**  
**SECTIONS 18 & 19 DOUGLAS TOWNSHIP, SHELBY COUNTY, IOWA**  
**SECTIONS 2 & 3 CASS TOWNSHIP, HARRISON COUNTY, IOWA**  
**MONDAY, JUNE 27TH, 2022 @ 11:00am**  
**SIMULCAST ONLINE BIDDING AVAILABLE DURING LIVE AUCTION**  
 Please go to [www.jimschaberenalestate.com](http://www.jimschaberenalestate.com) for details.  
**SALE LOCATION: ST. MARY'S PARISH HALL- 502 4TH ST. PORTSMOUTH, IOWA**

**TRACT 1: 86.5 ACRES CSR2 74.6**  
**LEGAL DESCRIPTION:** For complete legal description contact Schaben Real Estate, LLC.  
**FARM LOCATION:** 2.1 Miles West of Kirkman on F-32. Farm is located on the North and South side of F-32.  
**PHYSICAL DESCRIPTION:** A highly Productive, nearly level tract of farm land located on F-32, a hard surface road.  
**ESA INFORMATION:** Farm #: 1954 Tract# 1954 Farmland: 93.22 Acres Cropland: 70.09 Acres CSR #2: 74.6 Corn Base Acres: 34.60 Acres Corn Yield: 165 Bu. Soybean Base Acres: 35.49 Acres Soybean Yield: 50 Bu.  
**SOIL TYPES:** Zook, Dockery-Quiver, Ackmore, Kennebec, Burchard, and Monona Silt and Clay Loams.  
**TAXABLE ACRES:** 86.5 **TAXES:** \$2396.00  
 Seller will credit the buyer \$10,000 at closing as partial rent for 2022 crop year  
**POSSESSION:** Possession at closing subject to all tenants rights until 3-1-2023.



**TRACT 2: 101.2 ACRES CSR2 54.9**  
**LEGAL DESCRIPTION:** For complete legal description contact Schaben Real Estate, LLC.  
**FARM LOCATION:** SE of the corner of 220th and Tucker Ave. which is 4 miles NW of Portsmouth or 4 miles SE of Woodbine.  
**PHYSICAL DESCRIPTION:** A rolling hill farm that boasts nearly 1/3 of the acres that are 93 CSR and 2-5% slopes.  
**ESA INFORMATION:** Farm #: 7228 Tract# 15065 Farmland: 103.02 Acres Cropland: 92.16 Acres CSR #2: 54.9 Corn Base Acres: 36.30 Acres Corn Yield: 160 Soybean Base Acres: 36.60 Acres Soybean Yield: 50 Bu.  
**SOIL TYPES:** Ida, Napier and Monona Silt Loam  
**TAXABLE ACRES:** 101.2 **TAXES:** \$2450.00  
**CRP CONTRACT:** 13.3 Acres x Annual Rate \$199.16= \$2649.00.  
 Contract expiration 9-30-27. Buyer is required to assume CRP Contract.  
 Seller will credit the buyer \$12,500 at closing as partial rent for 2022 crop year  
**POSSESSION:** Possession at closing subject to all tenants rights until 3-1-2023.



**SALE MANAGERS NOTE:** Two very productive farms in a high state of productivity and weed control. It will be worth your time to drive by and/or go to our website for full details and drone footage.  
**TERMS:** At the conclusion of the auction the Buyer(s) will be required to sign a Real Estate Contract putting 15 percent of the sale price in escrow with Kate Kohorst Trust Account. Balance of the funds will be due and payable on or before closing. Sellers will furnish Buyer(s) with abstract showing marketable title and deed. Taxes will be prorated to closing date and paid by sellers. Buyer(s) to receive full farming rights for the 2023 crop year. There will be no combining of tracts.  
**CLOSING DATE:** On or before September 1, 2022.  
**POSSESSION:** Landlords possession at closing. Full possession on March 1st, 2023. Buyer(s) to receive full farming rights for 2023.  
**ADDITIONAL CONDITIONS:** Property is being sold "as is" subject to any current right-of-ways or easements. All information has been gathered from sources deemed reliable, however neither Sellers, nor Schaben Real Estate, LLC make any guarantees, either expressed or implied, as to their accuracy. It is the responsibility of the Buyer(s) to exercise due diligence to verify any and all figures. Any announcements made day of sale take precedence over printed material. All bidding increments are at the discretion of Schaben Real Estate, LLC. Successful bidder(s) will enter into a purchase agreement contract at the conclusion of the auction. Sale is not contingent on Buyer(s) financing.  
**AGENCY DISCLOSURE:** Schaben Real Estate, LLC represents the seller in this transaction. Closing Attorneys Kate Kohorst For more info Jim Schaben at 712-263-9449.

**SCHABEN REAL ESTATE, LLC**  
**JAY SCHABEN, BROKER/OWNER, JIM SCHABEN, OWNER,**  
 ALAN FARA, SUSIE SOHM, RON STEINHOFF, BOB SCHMITZ, ELIZABETH HEISTAND  
 701 Hwy 30 West, Dunlap, IA 51529 712-643-2350 [www.jimschaberenalestate.com](http://www.jimschaberenalestate.com)  
 Closing Attorney: Kate Kohorst

**FARM/HOUSEHOLD/LAND AUCTIONS**  
 Auctioneers - your listings also ARE on [HarlanOnline.com](http://HarlanOnline.com)'s free online classified pages

June 28 - 289.33 acre Harrison Co, IA Online Only Land Auction, bidding begins June 21. Tract 1, 160 acres m/l Section 13 Douglas Twp, Harrison Co, 112.21 Certified Cropland/48.3 CSR2. Park Family Farm, LLC Owner. Tract 2, 129.33 acres m/l Section 24 Douglas Twp, Harrison Co, 118.77 Certified Cropland/43.7 CSR2. AM Farms, LLC-Owners. Ed Spencer, Broker/Auctioneer 402-510-3276, Spencer Auction Group 322 E 7th St, Logan, IA 51546, [www.spencerauctiongroup.com](http://www.spencerauctiongroup.com)  
 July 15 - 10 am - High CSR Kennebec Township Maple Bottom Land Auction, Bruce & Kari Dobrovolsky, held at Onawa Community Building, McCall Auctions & RE, Russ and Brent McCall Auctioneers  
 July 24 - 11:00 a.m. - Antiques, Farm Toys, Doll Collection, Household Auction, Donald V. Nielsen Estate Owners, (from Avoca, IA), Walnut Community Center, 415 Antique City Dr., Walnut, IA, Osborn Auction LLC  
 July 25 - 10 a.m. 156 Taxable Acres M/L Shelby Co. Farmground, Cass Twp., Section 35, H. Dwain Boeck Trust, Owners; Location: Thekildsen Center 706 Victoria St. Harlan, IA, Closing Attorney: Daniel Fischer, Osborn Auction LLC  
 August 14 - 11:00 a.m. - Antiques, Primitives, Antique Glassware, Household Auction, Carol Johnk Estate Owners (He is from Griswold, IA, Walnut Community Center, 415 Antique City Dr., Walnut, IA, Osborn Auction LLC  
 August 31 - 10 a.m. 156.1 Acres M/L Shelby Co. Farmground- Lincoln Twp., Section 34, Johnken Inc. Owner, Sale Location: Thekildsen Center 706 Victoria St. Harlan, IA, Closing Attorney: Daniel Fischer, Osborn Auction LLC

## DUNLAP LIVESTOCK AUCTION

701 Hwy 30 W, Dunlap, IA 51529, 712-643-5761

Sale Times for Tuesday, June 7<sup>th</sup> @ 9:00 am Fed Cattle, followed by Weigh Cows & Bulls, Feeder Cattle @ 12:30pm then Bred Cows/Pairs/Breeding Bulls

Hoping everyone had a safe Memorial Day weekend. We received nice moisture over the past few days & probably are at pretty acceptable levels right now. It won't be long & we could use a nice warm summer rain. We are working on our next cow & bull auction which would be Wed. June 15<sup>th</sup>. Next week our very own Will Epperly will be heading to Shipshewanna Indiana to compete at the World Livestock Auctioneering Championship. Best of luck!!

**Special Calf/Yrkg Auction - Friday June 3<sup>rd</sup> @ 10:30**  
 Featuring 4 loads of Strs 825-925#

**Fed Cattle/Weigh Cows: Tuesday, May 24<sup>th</sup>:**  
 The Fed Cattle were lower, but we also lacked the front-end choice/prime str's like we've had in the past. With feed costs, high grading cattle are sure getting hard to find. We had a nice run of weigh ups on a slightly higher market. Boy I think we get short on weigh cows over the next 8 weeks. Hopefully that means higher prices.

WEIGH COWS 300 hd	FAT CATTLE 338 hd	Strs	Hfrs
Fed Cows \$84-\$94	Top	\$144.50	\$143.60
Bulk Cows \$73-\$83	Choice	\$140-\$144.50	\$140-\$143.60
Low Yield \$55-\$65	Str. Select/Choice	\$138-\$140	\$135-\$139
High Yield Bulls \$112-\$122	2-Ways	\$140-\$145	\$No Test
Bulk of Bulls \$100-\$112	Choice Holsteins	\$No Test	
Cutting Bulls \$90-\$120	Select Holsteins	\$No Test	
Preg open hfrs \$105-\$125	Fat Hfrs	\$90-\$115	
Hfrs \$70-\$100			

### UPCOMING AUCTIONS

**Wednesday, June 1st:** Special Bred Female  
**Friday, June 3rd:** Special Calf/Yrkg  
**Wed. June 15th:** Special Bred Female **Friday, June 24th:** Special Calf/Yrkg  
**Monday, June 27th:** Mildred C. Reinig Trust & Thomas A. Reinig, Real Estate Auction 187.7 Acres M/L, 2 Tracts. Schaben Real Estate LLC

Office: 712-643-5761  
 Jim Schaben Jr. 263-9449 • Jon Schaben 263-0755  
 Will Epperly 712-269-5677 • Don Stessman 712-263-7505  
 Bob Paulsrud 712-830-7438 • Greg Drake 712-304-4325  
 Web Site: [www.dunlaplivestock.com](http://www.dunlaplivestock.com)

It Pays to Advertise in the Rocket!



**FOR SALE:** 2012 36' Stone Ridge 5th Wheel Camper. Four slides, 2 A/C units, new tires, new microwave, new Smart TV, comes with locking wheel chocks, Front A-frame stabilizer, water filter, plates & silverware, pots & pans and many other extras. \$38,000. Call Milt for details and pictures, 402-676-3962. 22+

**05/31/22**

**Call 1-888-343-2154 To Place Your Ad In The Rocket**

**Avoca, Iowa**

**FOR SALE:** Farm tractor/truck batteries - \$50 Each. 13"x7" - 8" tall. Obtained from truck firm that replaces batteries every year - most only 12-14 months old! Crank amps 650 and above. New inventory and back to the old price since batteries are now available. Please call Don, Avoca, Iowa 402-681-4763. tfn\*

**SUBSCRIBE TO THE OAKLAND HERALD**  
In-state \$35/year, \$66/2 years; Out-of-state \$45/year; Combo of Oakland Herald & Avoca Journal-Herald, \$50/year; Please make checks payable to Journal-Herald, P.O. Box 308, Avoca, Iowa 51521 (please be sure to specify either the Oakland Herald or Avoca Journal-Herald).

**AHSTW COMMUNITY SCHOOL DISTRICT**  
*is accepting applications for a*  
**NIGHT CUSTODIAN**

Starting salary \$15/hour with potential increase based on experience. Shift is 2 pm to 10 pm Monday through Friday. Single insurance paid for by district. Send resume to:

**AHSTW COMMUNITY SCHOOL**  
Attn: Dennis Hullinger  
768 South Maple St. • Avoca, IA 51521  
Phone: 712-343-6364 Ext. 7501  
Fax: 712-343-2170 EOE/AA

**FOR SALE:**



**USED 9'6" BOAT-SHAPED CONFERENCE TABLE**  
With 8 Swivel Stuffed Arm Chairs  
In Great Shape!

**USED COPY MACHINE CABINETS**  
*with storage space*



24" Tall x 25.5" Wide x 21.5" Deep  
**\$50**



11" Tall x 21.5" Wide x 19.5" Deep  
**\$30**

**Call Don 402-681-4763 Avoca, Iowa**

**AHSTW COMMUNITY SCHOOL DISTRICT**  
*is accepting applications for the position of*  
**SECONDARY HELP DESK**  
**WITH THE DIRECTOR OF TECHNOLOGY**

General Responsibilities: This position will: work with the Director of Technology to provide outstanding customer service to students, staff, parents and other community members. Provide student supervision in the library as needed and perform library duties that includes checking books in/out and shelving books.

The person who fills this position must be able to work independently, be intrinsically motivated, highly organized, detail oriented, generate creative solutions, and self-monitoring of personal performance, while focusing on staff and students' needs, providing solutions in a timely and sensitive manner.

Starting wage will be \$15 per hour and a complete job description can be found on our Facebook page. To apply please send your resume to:

Attn: Ryan Smith, Technology Director  
**AHSTW COMMUNITY SCHOOL**  
768 South Maple St. • Avoca, IA 51521  
Phone: 712-343-6364 Ext. 7501  
Fax: 712-343-2170 EOE/AA

**No Hassle. Convenient. Real-Time BIDDING. ONLINE Auctions.**

Sell with confidence! We will promote your items to *qualified* bidders from 90+ countries.

Online Bidding Powered By  
**AuctionTime.com**

Gary **JURANEK**  
& Associates  
Auctioneers & Real Estate  
[www.juranekonlineauctions.com](http://www.juranekonlineauctions.com)

**Gary Juranek, Auctioneer**  
402-659-4932

**Bob Husz, Field Representative**  
402-981-4307



**VOTE JUNE 7TH**

*Jenni*  
**SANDAU**

**COUNTY RECORDER**

Paid for by Jenni Sandau for PCR



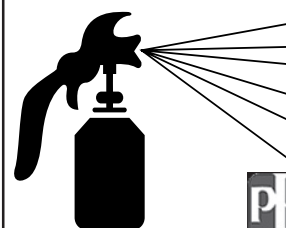
**WE'VE GONE GREEN WE'VE GONE GREEN**

**USING ENVIRONMENTALLY-FRIENDLY WATERBORNE FINISHES**

We believe in preserving our future. That is why our collision center chose environmentally-friendly products, including high performance waterborne automotive refinish coatings, from PPG.

- Higher resolution color than traditional solvent body shops
- We've reduced our volatile emissions by up to 80%
- Improved air quality for the work environment & community
- Reduced hazardous waste
- Lifetime Limited Warranty for as long as you own your vehicle!

**Green Business for a Greener Community!**



*Hetrick*  
Auto Body



502 Marne Rd.  
P.O. Box 53  
Marne, Iowa 51552

Phone 712-781-2211

Fax: 712-781-2219

Toll Free: 1-800-568-8513

[www.hetrickauto.com](http://www.hetrickauto.com)

**OLESEN**  
Auto Center, Inc.  
SALES-SERVICE-TIRES



**2021 Chevy Silverado 2500 HD Regular Cab 4x4**  
6.6L gas engine, 6-speed auto transmission, air, tilt, cruise, AM-FM stereo, power windows, locks, mirrors, locking rear differential, 3.73 axle ratio, snowplow prep package, nerf bars. 14K miles, White.

**\$48,995**



**2021 Chevy Silverado 2500 HD Regular Cab 4x4**  
6.6L gas engine, 6-speed auto transmission, air, tilt, cruise, AM-FM stereo, power windows, locks, mirrors, locking rear differential, 3.73 axle ratio, snowplow prep package, nerf bars. 26K miles, White.

**\$46,995**



**2021 Chevy Silverado 2500 HD Regular Cab 4x4**  
6.6L gas engine, 6-speed auto transmission, air, tilt, cruise, AM-FM stereo, power windows, locks, mirrors, locking rear differential, 3.73 axle ratio, snowplow prep package, spray-in bedliner, 22K miles, White.

**\$47,995**

**Our Service Dept. is Open Daily 8-5**

- Oil Changes
- Maintenance & Repairs
- Tire Sales & Repairs

[www.olesenautocenter.com](http://www.olesenautocenter.com)  
Celebrating 105 Years Serving the Area...Great Service After the Sale!  
AVOCA, IA • 712-343-6321

**HENRY WELL COMPANY**

**WATER WELLS**

CALL: 1-800-432-0008  
OAKLAND, IOWA

**SINCE 1956**

**WANTED**

**DAMAGED GRAIN**

Feed - Fertilizer  
Trucks & Vacs Available  
Licensed • Bonded

**KOSTER GRAIN, INC.**

Carroll, Iowa 51401  
Phone: 1-800-798-5421



# Real Estate Sells @ Noon

**Primitives - Ammo & Reloading Equip - Tools - Iron**

## Saturday June 11<sup>th</sup> - 10AM

### Alce Croson Estate - 402 S. Central St. Carson IA.



**Minimum Opening Bid - \$175,000**

Year built: 2001 Ranch Style  
Main Floor sq. Ft.: 1728  
Basement: Full unfinished  
Bedrooms: 3  
Bathrooms: 2  
Garage: 2-car attached  
Lot Size: 112' x 150' - .39 Acre  
Gross Taxes: \$3280.13  
Net Taxes: \$3108.00  
Shop #1: 24' x 45' built 1999  
Shop #2: 25' x 51' built 2007

#### TERMS & CONDITIONS: (Abbreviated)

Successful bidder will execute Purchase Agreement.  
Earnest Deposit of \$10,000 required day of Auction.  
Closing to be on or before July 15, 2022.  
Taxes will be prorated to the date of closing.  
Cost of Title Insurance & Closing fee to be split 50/50.  
A 2.5% Buyers Premium will be added to final bid to determine final Purchase Price.  
Sale subject to easements & right of ways of record.  
Menke Auction & Realty are Agents for seller.  
Property is being sold: "AS IS".  
Contact Auctioneer for COMPLETE list of Terms.

**NOTE: Bring a friend and your own boxes - We will be selling the items where they are, and you will be responsible for picking the items out as we walk through the buildings!!**

#### Shop Tools:

2 Large shop air compressors  
NEW Roto Phase converter  
Ruemelin sand blast cabinet  
Oster electric pipe threader  
Drill presses & pedestal grinders  
Homemade rifling machine  
Tire machine & balancer  
MSC milling & drilling machine  
Terrco Duplicating machine  
Radial arm, scroll & chop saws  
Miller & Excide welders  
Dust collection system  
Metal work benches - floor jacks

#### Primitives & Collectibles:

Several Platforms & Countertop scales  
Crocks, Nail Kegs, Wood milk crate  
Lanterns, Cream cans, brass torches  
Graystone Milk box, Upright Dr. scale  
Stainless Steel locking medical cabinet  
Upright gentleman's dresser  
CB radios & base station  
Military gun rack - Storz hanging lights  
Brunswick Contender slate pool table  
Old wood lathe - Tabletop collectibles  
Antique fishing lures  
Long gun parts, barrels etc.

#### Miscellaneous:

Ammo reloading presses  
Assorted Reloading dies  
Reloading supplies  
Vintage ammo boxes  
Assorted boxes of ammo  
Assorted pipe & iron  
Old small engines & motors  
New Charcoal grill/smoker  
Pipe benders & pipe vise  
Cub Cadet 125 riding mower  
Oxy & Acetylene bottles  
Parts washer - 2-wheel carts  
Lg. amount scrap iron items

All items must be removed from the site the day of the auction.

**MENKE  
AUCTION &  
REALTY**



**Byron Menke - Auctioneer**  
**Office: 712-487-3542**

[www.MenkeAuction.com](http://www.MenkeAuction.com)

Harlan PennySaver/ROCKET • 05/31/22